

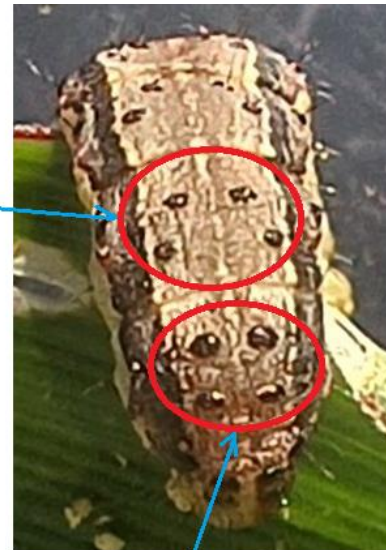


Main Diagnostic Features of Mature FAW Larvae



Inverted "Y-shaped" whitish suture on the front part of the head

4 dots arranged in the form of a trapezium on the other abdominal segments



4 distinct tubercles (raised spots) on the last abdominal segment

Main diagnostic features of mature FAW larvae (Photographs: Peter Chinwada)